



CURVE TABLE				
CURVE	RADIUS	ARC	CHORD	BEARING
C1	74.790	0.840	0.840	N20°53'30"W
C2		8.290	8.288	N17°51'28"W

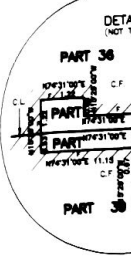
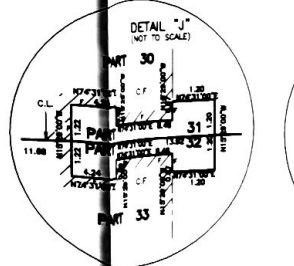
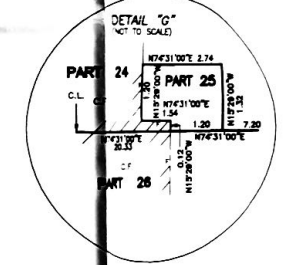
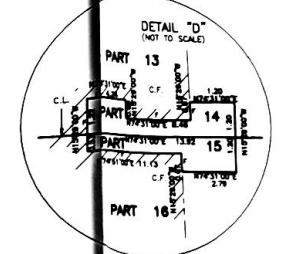
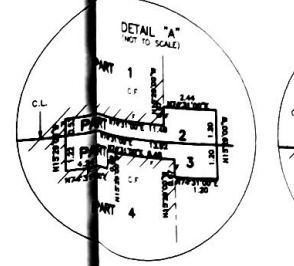
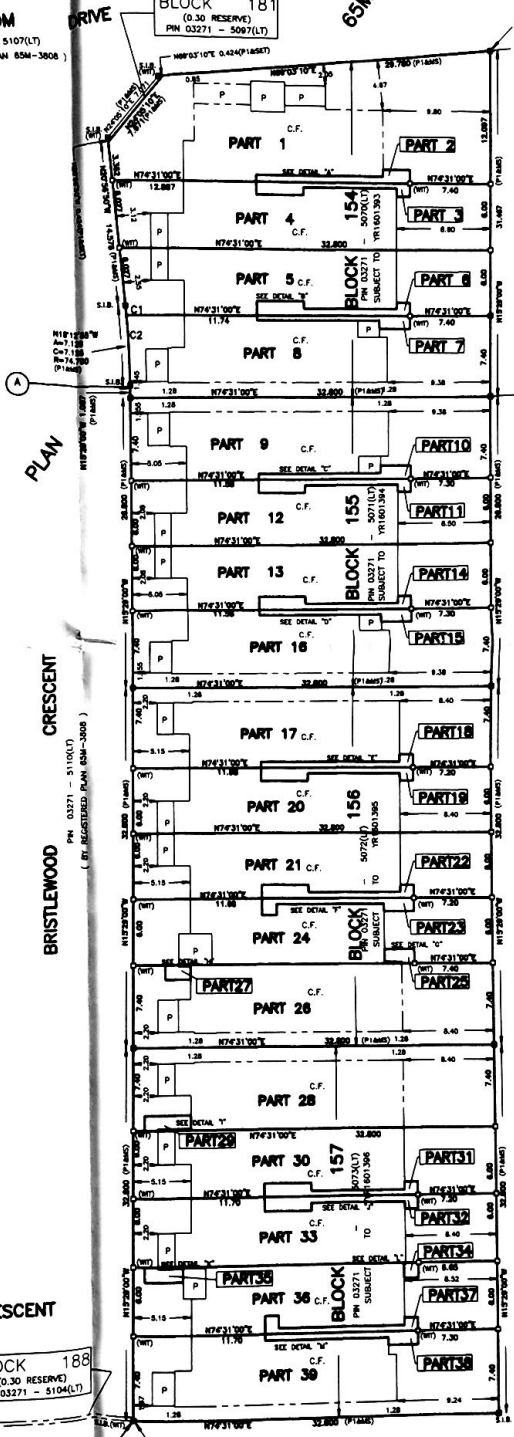
PART	LOT / PLAN
1	
2	
3	
4	
5	
6	
7	
8	

APPLE BLOSSOM DRIVE
 PIN 03271 - 5107(LT)
 (BY REGISTERED PLAN 65M-3808)

BLOCK 181
 (0.30 RESERVE)
 PIN 03271 - 5067(LT)

65M-3808

PART 1, PLAN 65R-28255
 PIN 03271 - 5823(LT)



REGISTERED

BRISTLEWOOD CRESCENT
 PIN 03271 - 5104(LT)
 (BY REGISTERED PLAN 65M-3808)

BLOCK 188
 (0.30 RESERVE)
 PIN 03271 - 5104(LT)

LOT 14, CONCESSION
 PART 40, PLAN 65R-24377
 PIN 03271 - 5823(LT)

LOT 14, CONCESSION 2
 PART 40, PLAN 65R-24377
 PIN 03271 - 5823(LT)

SOUTHWESTERLY ANGLE OF BLOCK 157

2

SCHEDULE							
PLAN	PIN	PART	LOT / PLAN	PIN	PART	LOT / PLAN	PIN
154-3808	ALL OF PIN 03271-3070(L1)	9	BLOCK 155, PLAN 65M-3808	ALL OF PIN 03271-3071(L1)	17	BLOCK 156, PLAN 65M-3808	ALL OF PIN 03271-3072(L1)
		10					
		11					
		12					
		13					
		14					
		15					
		16					
		17					
		18					
		19					
		20					
		21					
		22					
		23					
		24					
		25					
		26					
27							

PLAN 65M-33519
RECEIVED AND DEPOSITED

DATE MARCH 13, 2012

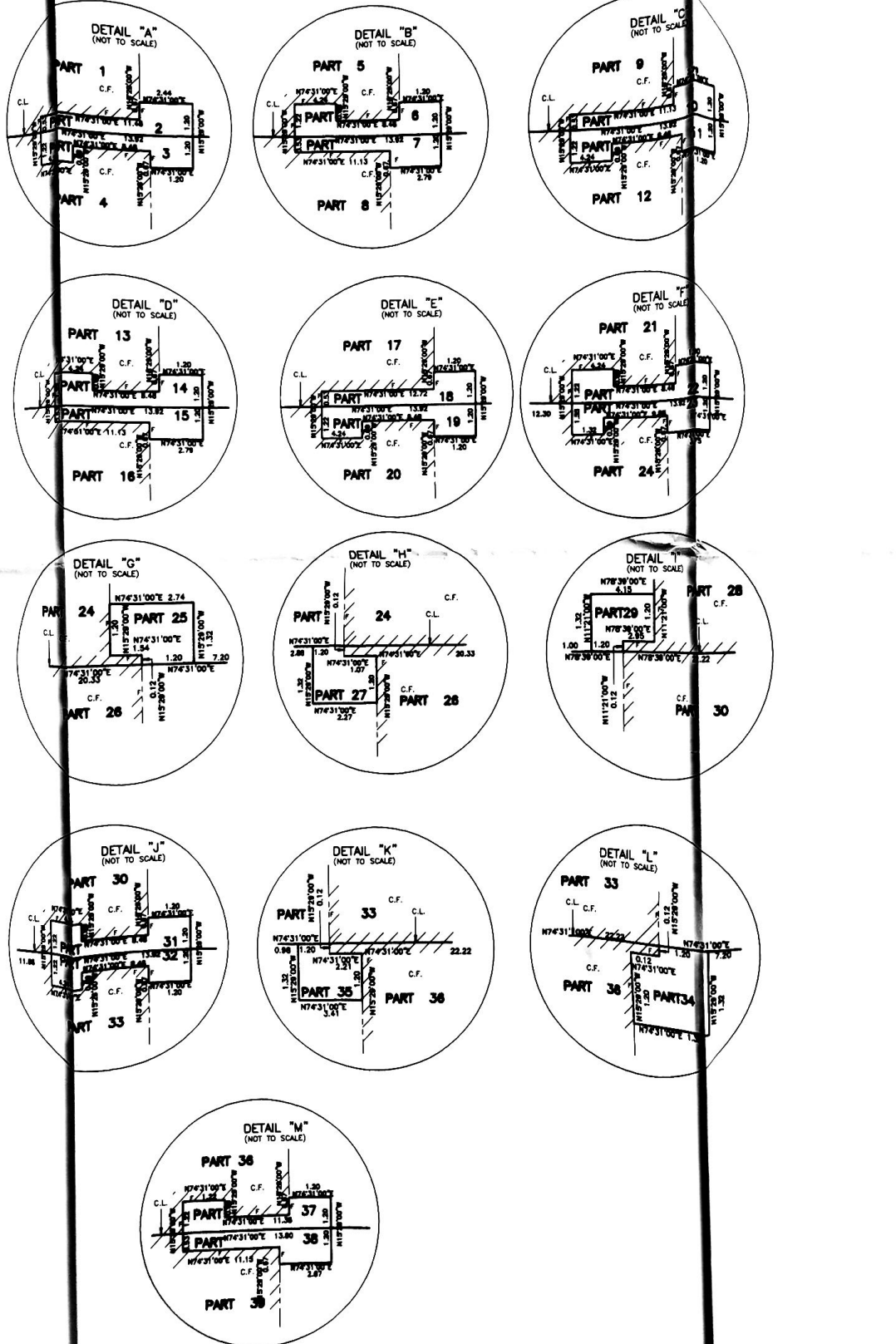
P.J. Thorpe
P.J. THORPE
ONTARIO LAND SURVEYOR

DATE March 13, 2012

G.M. BEED STREET
REPRESENTATIVE FOR THE LAND REGISTRY
FOR THE LAND TITLES DIVISION OF
YORK REGION (No. 85)

"METRIC" DISTANCES AND COORDINATES SHOWN HEREON ARE IN METRES AND CAN BE CONVERTED TO FEET BY DIVIDING BY 0.3048.

PARTS 1, 2, 3, 4, 5, 6, 7 & 8 ARE SUBJECT TO EASEMENT FOR ENTRY AS IN YR1801384
 PARTS 9, 10, 11, 12, 13, 14, 15 & 16 ARE SUBJECT TO EASEMENT FOR ENTRY AS IN YR1801386
 PARTS 17, 18, 19, 20, 21, 22, 23, 24, 25, 26 & 27 ARE SUBJECT TO EASEMENT FOR ENTRY AS IN YR1801386
 PARTS 28, 29, 30, 31, 32, 33, 34, 35, 36, 37, 38 & 39 ARE SUBJECT TO EASEMENT FOR ENTRY AS IN YR1801386



PLAN OF SURVEY OF
BLOCKS 154, 155, 156 & 157
REGISTERED PLAN 65M-3808
IN THE
CITY OF VAUGHAN
REGIONAL MUNICIPALITY OF YORK
SCALE = 1:300

P.J. THORPE, O.L.S.

- BEARING AND COORDINATE NOTE:**
- BEARINGS ARE GRID BEARINGS AND ARE DERIVED FROM OBSERVED REFERENCE POINTS, 'A' AND 'B', BY REAL-TIME NETWORK OBSERVATIONS, NAD 83 (ORIGINAL).
 - DISTANCES SHOWN ON THIS PLAN ARE ADJUSTED GROUND DISTANCES AND CAN BE CONVERTED TO GRID DISTANCES BY MULTIPLYING BY AN AVERAGE COMBINED SCALE FACTOR OF 0.99998.
 - COORDINATES ON THIS PLAN ARE NAD 83 (ORIGINAL) ADJUSTMENT AND ARE BASED ON OBSERVATIONS FROM A REAL-TIME NETWORK.

MTM COORDINATE (METRES)		
POINT ID	NORTHING	EASTING
A	4,855,281.183	307,433.883
B	4,855,281.171	307,458.788

THESE COORDINATE VALUES COMPLY WITH SECTION 14 (2) O. REG. 216/10.
 THESE COORDINATE VALUES CANNOT, BY THEMSELVES, BE USED TO RE-ESTABLISH THE CORNERS OR BOUNDARIES SHOWN ON THIS PLAN.

- NOTES**
- S.I.B. DENOTES STANCHION IRON BAR
 - S.S.I.B. DENOTES SHORT STANDARD IRON BAR
 - I.B. DENOTES IRON BAR
 - M.S. DENOTES MEASUREMENT
 - B DENOTES SURVEY MONUMENT FOUND
 - O DENOTES SURVEY MONUMENT PLANTED
 - P DENOTES REGISTERED PLAN 65M-3808
 - PN DENOTES PROPERTY IDENTIFIER NUMBER
 - (WT) DENOTES WITNESS
 - C.F. DENOTES CONCRETE FOUNDATION OF DWELLING UNDER CONSTRUCTION
 - C.L. DENOTES CENTRE LINE OF WALL
 - F. DENOTES FACE OF WALL
 - P DENOTES PORCH
- SHORT STANDARD IRON BARS WERE PLANTED DUE TO PROBABILITY OF UNDERGROUND SERVICES.
 ALL PLANTED SURVEY MONUMENTS ARE SHORT STANDARD IRON BARS, UNLESS NOTED OTHERWISE.
 ALL FOUND SURVEY MONUMENTS ARE IRON BARS, UNLESS NOTED OTHERWISE.
 ALL FOUND SURVEY MONUMENTS ARE BY IRONBAR SURVEYORS LTD., O.L.S., UNLESS NOTED OTHERWISE.

SURVEYOR'S CERTIFICATE

I CERTIFY THAT:

- THIS SURVEY AND PLAN ARE CORRECT AND IN ACCORDANCE WITH THE SURVEYS ACT, THE SURVEYORS ACT AND THE LAND TITLES ACT, AND THE REGULATIONS MADE UNDER THEM.
- THE SURVEY WAS COMPLETED ON THE 10th DAY OF JANUARY, 2012.

DATE MARCH 9, 2012

P.J. Thorpe
P.J. THORPE
ONTARIO LAND SURVEYOR

P.J. THORPE SURVEYING LTD.
38 BROOKHAVEN CRESCENT ORANGEVILLE, ONTARIO L9W 2Y8
(519) 941-7552 pjthorpe@rogers.com

DRAWN BY ACAD	CHECKED BY PT	SCALE = 1:300	REF No 11-864 (154-155, 156 & 157)
---------------	---------------	---------------	------------------------------------

CURVE	CHORD	ARC	CHORD BEARING
C1	74.750	6.286	89°57'37.9"
C2	74.750	6.286	81°17'12.9"

PART	LOT / PLAN	PN
1	BLOCK 15A PLAN 65M-3608	17
2		18
3		19
4		20
5		21
6		22

PART	LOT / PLAN	PN
7	BLOCK 15B PLAN 65M-3608	23
8		24
9		25
10		26
11		27
12		28

PART	LOT / PLAN	PN
13	BLOCK 15C PLAN 65M-3608	29
14		30
15		31
16		32
17		33
18		34

PART	LOT / PLAN	PN
19	BLOCK 15D PLAN 65M-3608	35
20		36
21		37
22		38
23		39
24		40

PART	LOT / PLAN	PN
25	BLOCK 15E PLAN 65M-3608	41
26		42
27		43
28		44
29		45
30		46

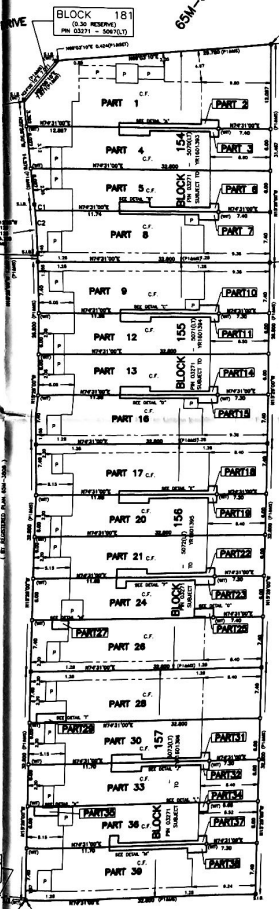
PART	LOT / PLAN	PN
31	BLOCK 15F PLAN 65M-3608	47
32		48
33		49
34		50
35		51
36		52

PART	LOT / PLAN	PN
37	BLOCK 15G PLAN 65M-3608	53
38		54
39		55
40		56
41		57
42		58

PART	LOT / PLAN	PN
43	BLOCK 15H PLAN 65M-3608	59
44		60
45		61
46		62
47		63
48		64

REQUIRE THIS PLAN TO BE DEPOSITED WITH THE LAND TITLE ACT
DATE: MARCH 13, 2012
DATE: MARCH 13, 2012
P.J. THORPE
CHIEF LAND SURVEYOR

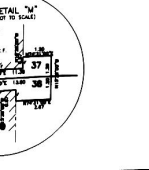
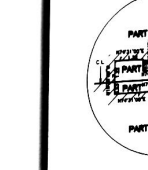
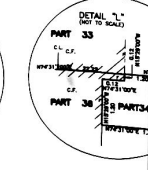
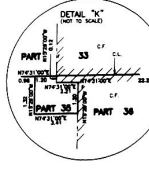
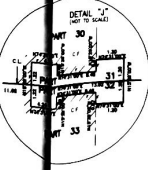
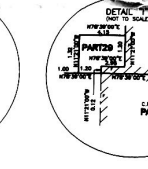
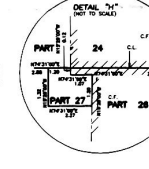
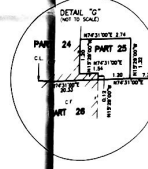
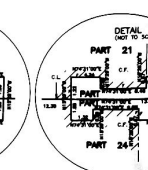
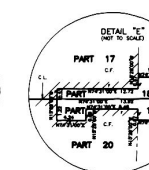
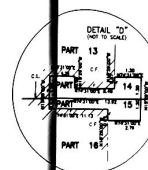
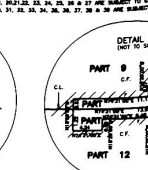
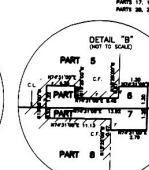
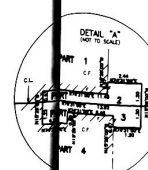
APPLE BLOSSOM
PN 03271 - 51076
(BY REGISTERED PLAN 65M-3608)



CONCESSION 1
PART 1, PLAN 65M-23205
PN 03271 - 50910

CONCESSION 2
PART 40, PLAN 65M-24237
PN 03271 - 51047

CONCESSION 3
PART 40, PLAN 65M-24237
PN 03271 - 51047



PLAN OF SURVEY OF
BLOCKS 15A, 15B, 15C & 15D
REGISTERED PLAN 65M-3608
IN THE
CITY OF VAUGHAN
REGIONAL MUNICIPALITY OF YORK
SCALE = 1:300
P.J. THORPE, O.L.S.

BEARING AND COORDINATE NOTE:
1. ALL BEARINGS ARE TRUE BEARINGS EXCEPT WHERE SHOWN OTHERWISE.
2. COORDINATE VALUES ARE IN METERS AND ARE REFERENCED TO THE 1984 NAD 83 DATUM.
3. COORDINATE VALUES SHOWN IN THIS PLAN ARE THE RESULT OF A COMPUTATIONAL CHECK AND ARE NOT TO BE USED FOR CONSTRUCTION PURPOSES.

POINT ID	NORTHING	EASTING
1	436821.113	80143.883
2	436821.111	80143.788

NOTES:
1. ALL BEARINGS ARE TRUE BEARINGS EXCEPT WHERE SHOWN OTHERWISE.
2. COORDINATE VALUES ARE IN METERS AND ARE REFERENCED TO THE 1984 NAD 83 DATUM.
3. COORDINATE VALUES SHOWN IN THIS PLAN ARE THE RESULT OF A COMPUTATIONAL CHECK AND ARE NOT TO BE USED FOR CONSTRUCTION PURPOSES.

SURVEYOR'S CERTIFICATE
I CERTIFY THAT
THIS SURVEY WAS MADE AND CONDUCTED IN ACCORDANCE WITH THE
LAND SURVEY ACT AND THE LAND TITLE ACT
AND THAT THE SURVEY WAS COMPLETED ON THE 13th DAY OF MARCH, 2012.
DATE: MARCH 13, 2012
P.J. THORPE
CHIEF LAND SURVEYOR

P.J. THORPE SURVEYING LTD.
34 BRIDLEWOOD CRESCENT, CHESHAMVILLE, ONTARIO, CANADA L9V 2Y9
(905) 881-1532
www.thorpesurveying.com