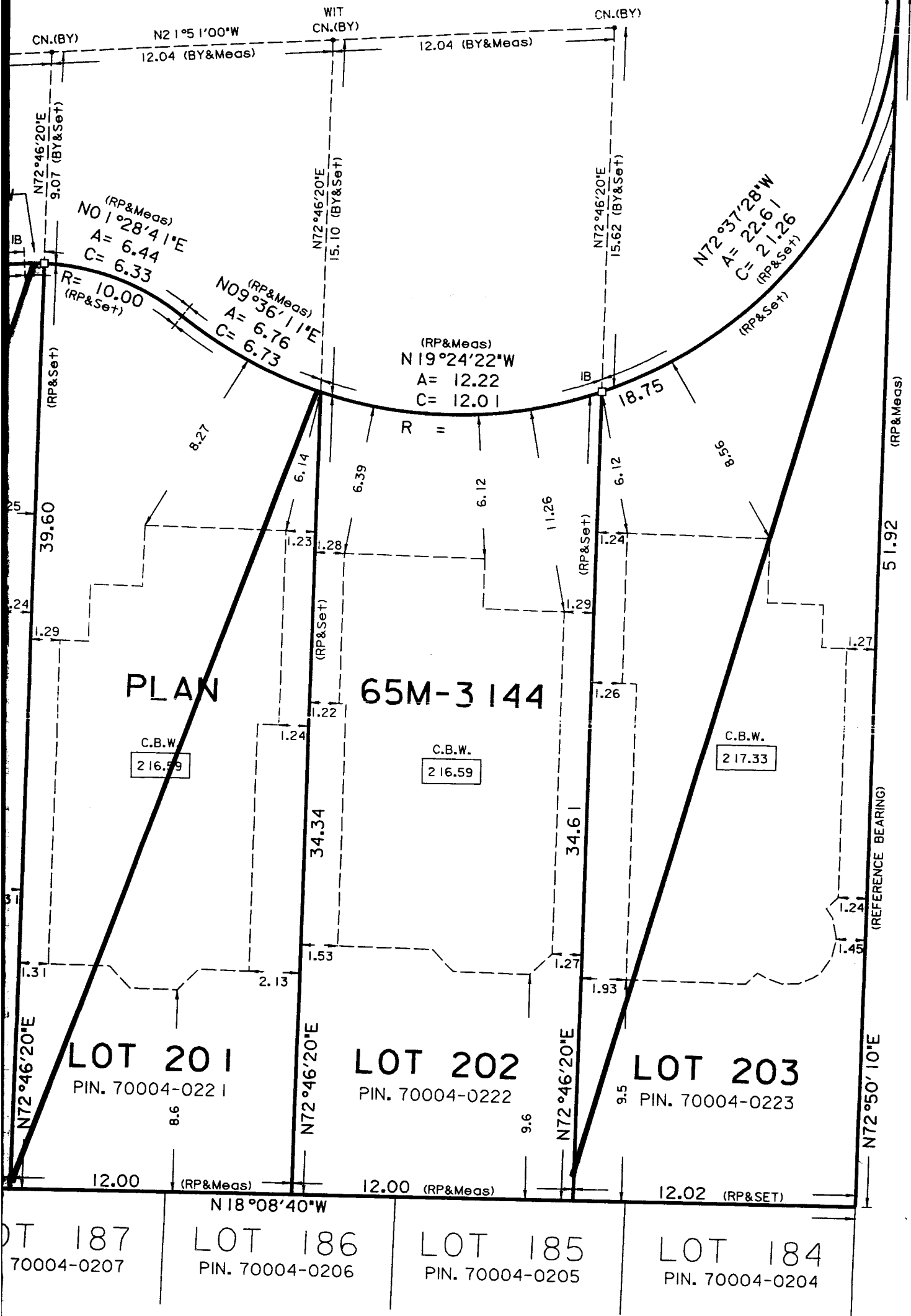


LORD NELSON COURT

(BY REGISTERED PLAN 65M-3144)
PIN. 70004-0290



EAST HALF OF LOT 22 CONNECTION

ASSOCIATION OF ONTARIO
LAND SURVEYORS
PLAN SUBMISSION FORM
1137149

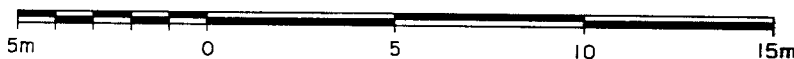


THIS PLAN IS NOT VALID
UNLESS IT IS AN EMBOSSED
ORIGINAL COPY
ISSUED BY THE SURVEYOR
In accordance with
Regulation 1026, Section 29(3).

SURVEYOR'S REAL PROPERTY REPORT

PLAN OF
LOTS 200, 201, 202 AND 203
PLAN 65M - 3144
TOWN OF RICHMOND HILL
REGIONAL MUNICIPALITY OF YORK

SCALE 1 : 200



BENNETT YOUNG LIMITED
PROFESSIONAL LAND SURVEYORS

REPORT

REGISTERED EASEMENTS AND/OR RIGHTS-OF-WAY
LOT 200 - SUBJECT TO EASEMENT AS SET OUT IN INST.

NOTES:

THIS PLAN AND REPORT WAS PREPARED FOR THE SOLE
USE OF VIEW-MAC HOMES INC.

BEARINGS ARE ASTRONOMIC AND ARE REFERRED TO THE
SOUTHEASTERLY LIMIT OF LOT 203 AS SHOWN ON
REGISTERED PLAN 65M-3144, HAVING A BEARING OF N72°50'10"E.

LEGEND

BY ----- BENNETT YOUNG LIMITED., O.L.S.
RP ----- REGISTERED PLAN 65M-3144
CN ----- CONCRETE NAIL
WIT ----- WITNESS
CBW ----- CONCRETE BASEMENT WALLS
000.00 ----- ELEVATION ON TOP OF BASEMENT WALL
Meas. ----- MEASURED

SURVEYOR'S CERTIFICATE

I CERTIFY THAT:

- THIS SURVEY AND PLAN ARE CORRECT AND IN ACCORDANCE
WITH THE SURVEYS ACT, THE SURVEYORS ACT, THE LAND
TITLES ACT AND THE REGULATIONS MADE UNDER THEM.
- THE SURVEY WAS COMPLETED ON THE 7th DAY OF OCTOBER
1997.

OCTOBER 21, 1997
DATE:

JOHN G. BOYD
ONTARIO LAND SURVEYOR

© COPYRIGHT, 1997 BENNETT YOUNG LIMITED

The reproduction, alteration or use of this REPORT, in whole or in part,
without the express permission of BENNETT YOUNG LIMITED, IS STRICTLY PROHIBITED.



Bennett Young Limited

PROFESSIONAL LAND SURVEYORS

50 RONSON DRIVE, SUITE 100, ETOBICOKE, ONTARIO, M9W-1B3

TEL: (416) 247-8691 FAX: (416) 247-6305

CHKD.

LP.

DRAWN BY:

JA.

W.O.

97174P17A

PART 1, PLAN 65R-18279
P.L.N. 03186-1075