

SURVEYOR'S REAL PROPERTY REPORT

PART 1 PLAN OF
LOT 28
PLAN 62M-1198

IN THE
CITY OF HAMILTON

SCALE: 1:200 metres



S.D. McLAREN, O.L.S. - 2014

**SURVEYOR'S REAL PROPERTY REPORT
(PART 2)**

LOT 28 PLAN 62M-1198 IS SUBJECT TO EASEMENTS AS DESCRIBED IN INSTRUMENTS WE932906 & WE948639, AS ILLUSTRATED ON THE PLAN.

THIS PLAN DOES NOT CERTIFY COMPLIANCE WITH ZONING BY-LAWS.

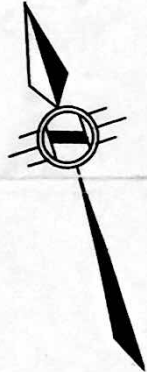
THIS PLAN WAS PREPARED FOR
LOSANI HOMES LTD.

**ASSOCIATION OF ONTARIO
LAND SURVEYORS
PLAN SUBMISSION FORM**

1913865

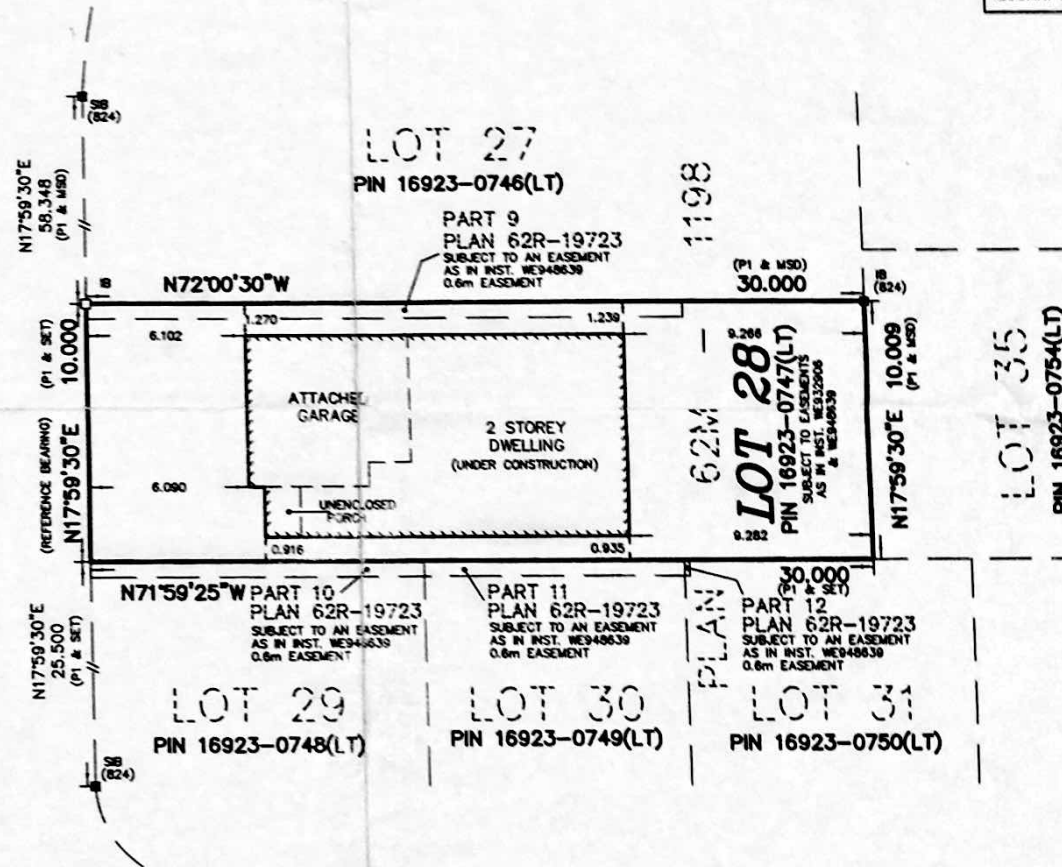


THIS PLAN IS NOT VALID UNLESS IT IS AN EMBOSSED ORIGINAL COPY ISSUED BY THE SURVEYOR in accordance with Regulation 1826, Section 29(3).



CHAMOMILE DRIVE

(ESTABLISHED BY PLAN 62M-1198)
PIN 16923-0813(LT)



LEGEND:

- DENOTES MONUMENT SET
- MONUMENT FOUND
- IB IRON BAR
- SIB STANDARD IRON BAR
- (824) A.T. McLAREN, O.L.S.
- MSD MEASURED
- P1 PLAN 62M-1198

BEARING NOTE

BEARINGS ARE GRID AND ARE REFERRED TO THE EASTERLY LIMIT OF CHAMOMILE DRIVE AS SHOWN ON PLAN 62M-1198 AS BEING N17°59'30"E.

METRIC NOTE

DISTANCES SHOWN ON THIS PLAN ARE IN METRES AND CAN BE CONVERTED TO FEET BY DIVIDING BY 0.3048

SURVEYOR'S CERTIFICATE:

- I CERTIFY THAT:
1. THIS SURVEY AND PLAN ARE CORRECT AND IN ACCORDANCE WITH THE SURVEYS ACT, THE SURVEYORS ACT AND THE REGULATIONS MADE UNDER THEM
 2. THE SURVEY WAS COMPLETED ON THE 27th DAY OF JUNE, 2014.

AUGUST 29, 2014

DATE

S.D. McLAREN, O.L.S.

NOTE:

A.T.M. CONTROL POINTS 31, 23 & 24 HAVE BEEN USED TO RE-ESTABLISH THE BOUNDARIES OF LOT 28.

© S.D. McLAREN, O.L.S. - 2014. NO PERSON MAY COPY, REPRODUCE, DISTRIBUTE OR ALTER THIS PLAN IN WHOLE OR IN PART WITHOUT THE WRITTEN PERMISSION OF S.D. McLAREN, O.L.S.



A.T. McLaren Limited
LEGAL AND ENGINEERING SURVEYS

88 JOHN STREET SOUTH, SUITE 230
HAMILTON, ONTARIO, L8N 2Z9
PHONE (905) 527-8556 FAX (905) 527-0032

Drawn AK Checked PG Scale 1:200 Dwg No. 33486-28F