



BEARING NOTE
 BEARINGS AND DISTANCES ARE GIVEN IN DEGREES MINUTES AND SECONDS. DISTANCES ARE IN METERS TO TWO DECIMAL PLACES. BEARINGS ARE TRUE BEARINGS EXCEPT WHERE SHOWN OTHERWISE.

NOTES AND LEGEND
 1. THE SURVEY AND PLAN ARE CORRECT AND IN ACCORDANCE WITH THE SURVEY ACT AND THE LAND TITLES ACT AND THE REGISTRY ACT.
 2. THE SURVEY WAS COMPLETED ON THE 15th DAY OF AUGUST 2000.

DATE: SEPTEMBER 13, 2000
R. SALVA, B.S.
 ONTARIO LAND SURVEYOR

PROPERTY OF THE REGISTRY OFFICE

PART	ALL OF LOT	REGISTERED	ALL OF PART	REGISTERED
1	34	654-3413	0332-0285	LT 1488317
2 AND 3	35	654-3413	0332-0286	LT 1488312
4 AND 5	36	654-3413	0332-0287	LT 1488313
6 AND 7	37	654-3413	0332-0288	LT 1488314
8 AND 9	38	654-3413	0332-0289	LT 1488315
10 AND 11	39	654-3413	0332-0290	LT 1488316
12 AND 13	40	654-3413	0332-0291	LT 1488317
14 AND 15	41	654-3413	0332-0292	LT 1488318
16 AND 17	42	654-3413	0332-0293	LT 1488319
18 AND 19	43	654-3413	0332-0294	LT 1488320
20 AND 21	44	654-3413	0332-0295	LT 1488321
22 AND 23	45	654-3413	0332-0296	LT 1488322

PROPERTY OF THE REGISTRY OFFICE

PLAN OF SURVEY OF LOTS 24 TO 33, 35 TO 37 AND 40 TO 45 ALL INCLUSIVE REGISTERED PLAN 654-3413 CITY OF VAUGHAN REGIONAL MUNICIPALITY OF YORK

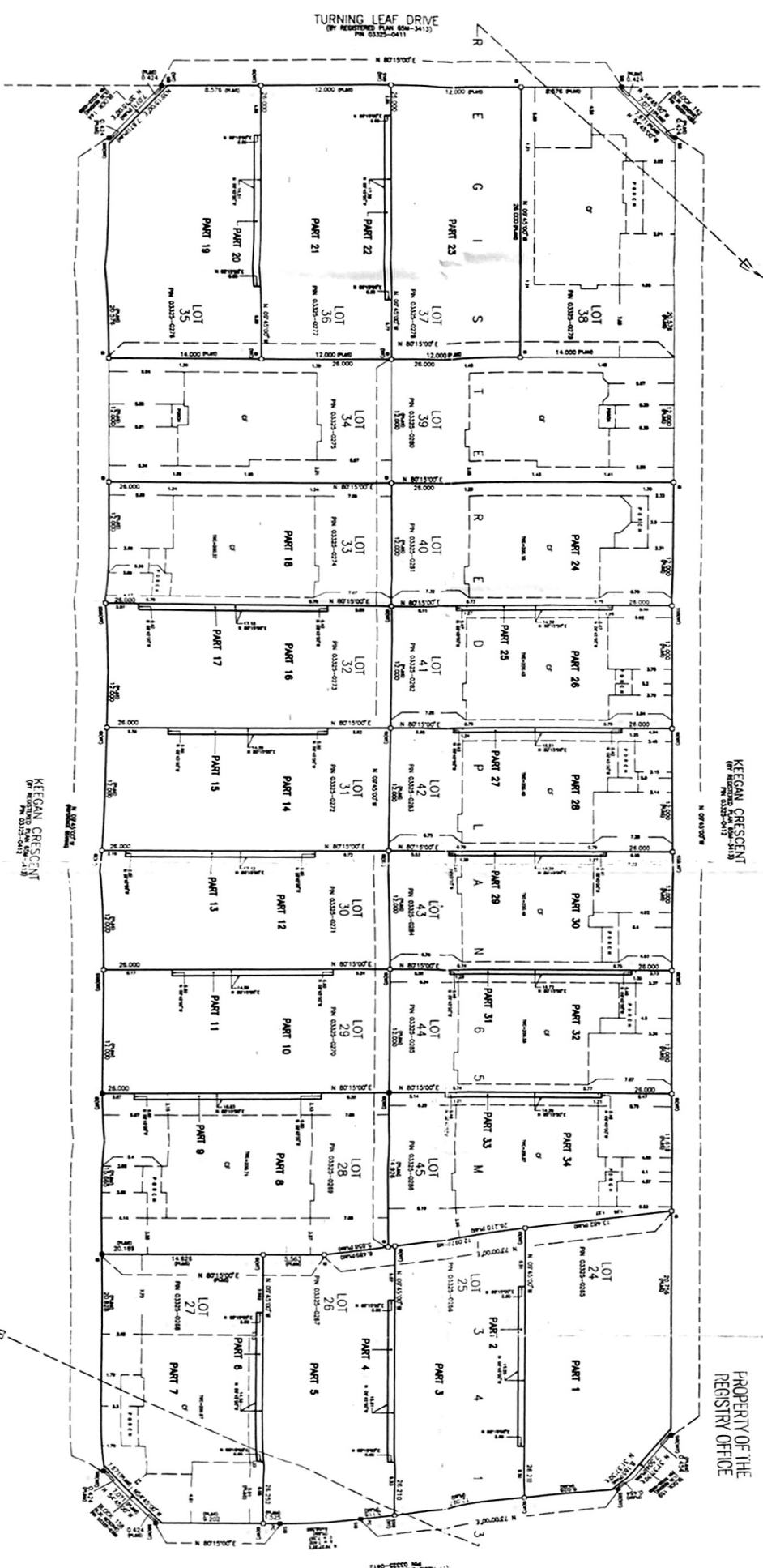
SCALE 1:200

P. SALVA CO. LTD., O.L.S.

19 Sept 2000

R. Salva

METRIC
 DIMENSIONS ARE GIVEN IN METERS AND DISTANCES ARE GIVEN IN METERS TO TWO DECIMAL PLACES.



P. SALVA COMPANY LTD.
 ONTARIO LAND SURVEYORS
 10225 YONGE STREET L4C 3K2
 RICHMOND HILL, ONTARIO
 PHONE (905) 884-3988 FAX (905) 737-7516
 FILE 89-63
 DRAWN BY: SALVA
 CREATED BY: SALVA

LOT SURVEY

PROPERTY OF THE REGISTRY OFFICE

PROPERTY OF THE REGISTRY OFFICE

KEEGAN CRESCENT
 REGISTRY PLAN 654-3413

KEEGAN CRESCENT
 REGISTRY PLAN 654-3413

TURNING LEAF DRIVE
 REGISTRY PLAN 654-3413
 PLAN 6542-0411