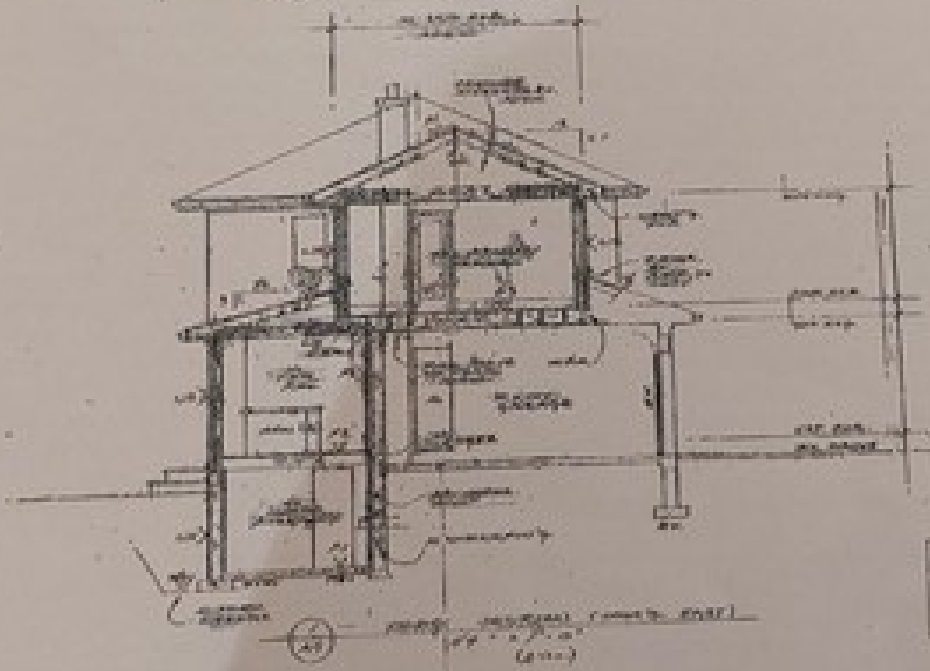


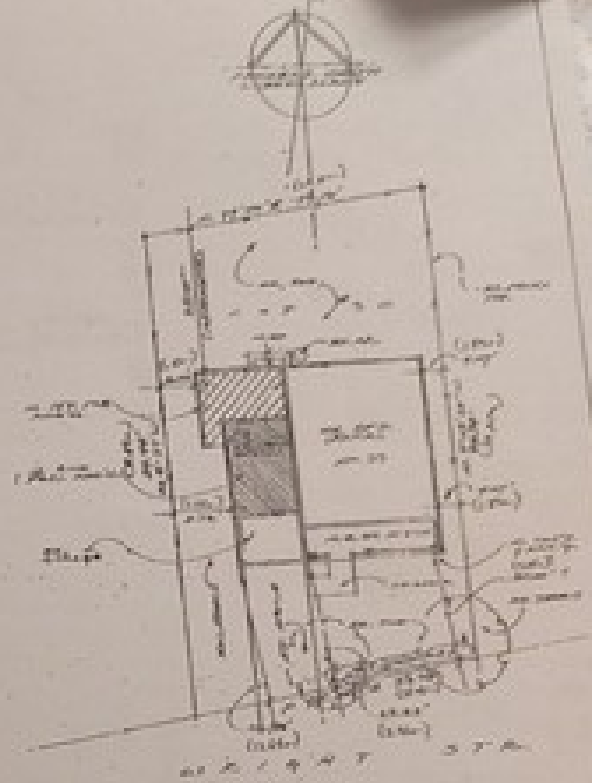
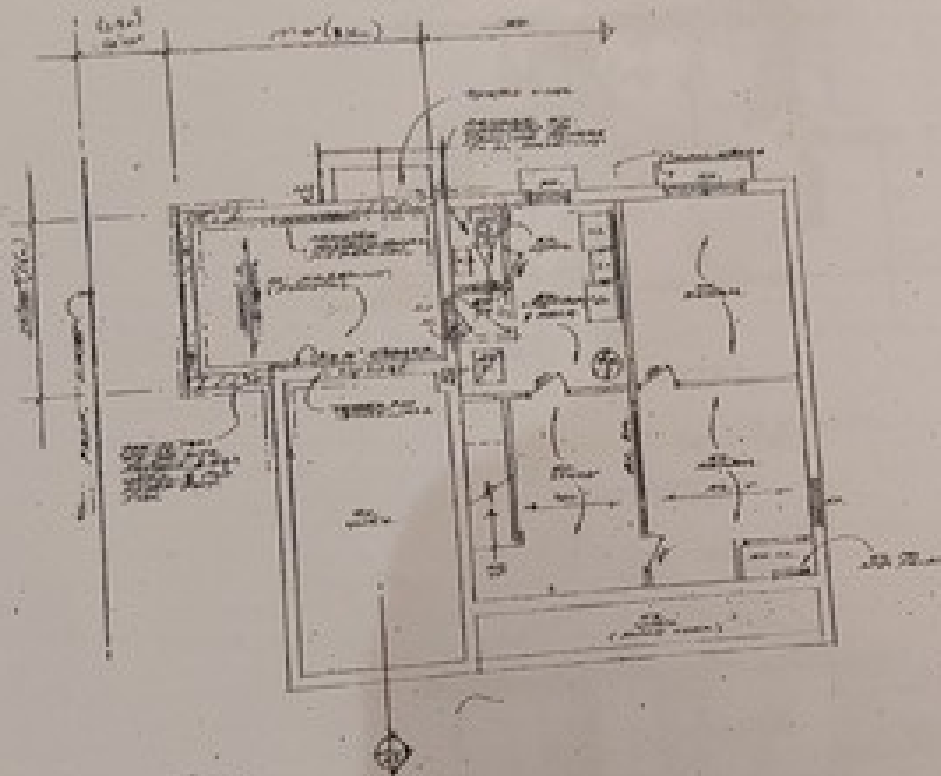
SECTION 1-1 - FRONT ELEVATION



SECTION 2-2 IS A SECTION THROUGH THE HOUSE SHOWING THE CONSTRUCTION OF THE ROOF AND INTERIOR WALLS AND CEILING. IT ALSO SHOWS THE LOCATION OF THE CHIMNEY AND THE POSITION OF THE STAIRS.

ARCHITECT
 [Signature]
 1920

DATE
 1920



Scale bar with a north arrow pointing to the right.

Scale bar with a north arrow pointing to the right.

THIS IS A REDUCTION OF A PLAN, THE ORIGINAL OF WHICH IS ON FILE IN THE OFFICE OF THE CLERK, 225 EAST BEAVER CREEK RD., RICHMOND HILL, ONT.

Scale bar with a north arrow pointing to the right.



DESCRIPTION OF FINISHES

- ① PLASTER AND PAINT
- ② BRICKWORK
- ③ WOOD TRIM
- ④ ROOFING
- ⑤ FLOORING
- ⑥ PAINTING
- ⑦ STAINING
- ⑧ GLASS
- ⑨ METAL
- ⑩ FABRIC
- ⑪ LEATHER
- ⑫ STONE
- ⑬ TERRAZZO
- ⑭ MARBLE
- ⑮ GRANITE
- ⑯ CEMENT
- ⑰ GROUT
- ⑱ ADHESIVE
- ⑲ SEALANT
- ⑳ INSULATION

SECTION C-C
 SECTION D-D
 SECTION E-E
 SECTION F-F
 SECTION G-G
 SECTION H-H
 SECTION I-I
 SECTION J-J
 SECTION K-K
 SECTION L-L
 SECTION M-M
 SECTION N-N
 SECTION O-O
 SECTION P-P
 SECTION Q-Q
 SECTION R-R
 SECTION S-S
 SECTION T-T
 SECTION U-U
 SECTION V-V
 SECTION W-W
 SECTION X-X
 SECTION Y-Y
 SECTION Z-Z

NOT TO SCALE



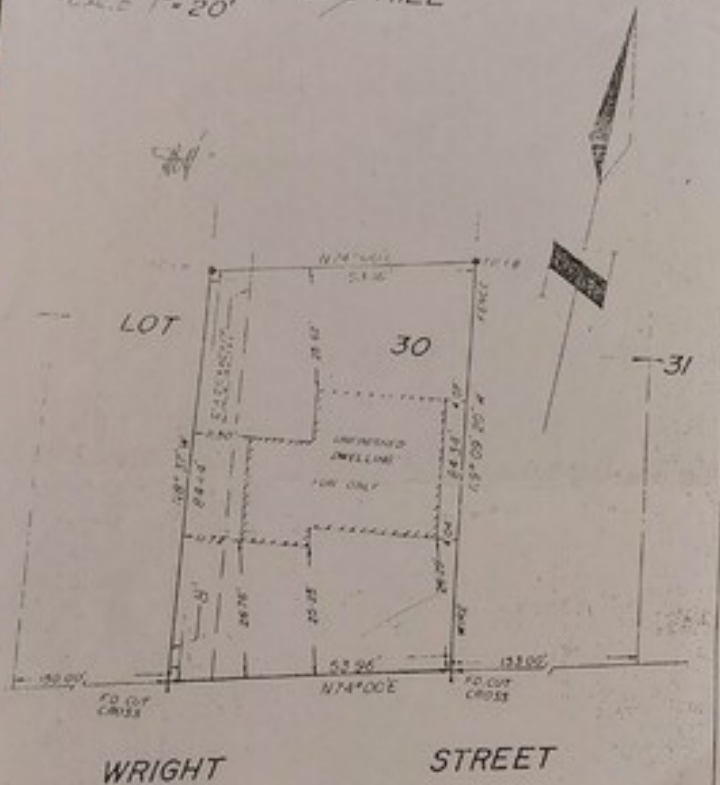
SECTION A-A
 SECTION B-B
 SECTION C-C
 SECTION D-D
 SECTION E-E
 SECTION F-F
 SECTION G-G
 SECTION H-H
 SECTION I-I
 SECTION J-J
 SECTION K-K
 SECTION L-L
 SECTION M-M
 SECTION N-N
 SECTION O-O
 SECTION P-P
 SECTION Q-Q
 SECTION R-R
 SECTION S-S
 SECTION T-T
 SECTION U-U
 SECTION V-V
 SECTION W-W
 SECTION X-X
 SECTION Y-Y
 SECTION Z-Z

SECTION A-A
 SECTION B-B
 SECTION C-C
 SECTION D-D
 SECTION E-E
 SECTION F-F
 SECTION G-G
 SECTION H-H
 SECTION I-I
 SECTION J-J
 SECTION K-K
 SECTION L-L
 SECTION M-M
 SECTION N-N
 SECTION O-O
 SECTION P-P
 SECTION Q-Q
 SECTION R-R
 SECTION S-S
 SECTION T-T
 SECTION U-U
 SECTION V-V
 SECTION W-W
 SECTION X-X
 SECTION Y-Y
 SECTION Z-Z

NOT TO SCALE

AP

PLAN OF SURVEY
 OF LOT 30, DEPOSITED PLAN 481Y
 TOWN OF RICHMOND HILL
 SCALE 1" = 20'



WILSON & MURPHY LTD
 140 Wood Avenue
 LOWDALE, Ontario

Roger A. H. Silvera
 ROGER A. H. SILVERA
 2140 JERLARY STREET WEST
 RICHMOND HILL, ONTARIO
 PHONE 368-4716
 REFERENCE 66-35

PROCESSED BY SURVEYOR
 JUNE 3 1966