

I REQUIRE THIS PLAN TO BE DEPOSITED UNDER THE LAND TITLES ACT.

PLAN 65R-20634

RECEIVED AND DEPOSITED:

DATE 2 OCTOBER 1998

DATE 13th Oct 1998

E.W. Bowyer

E. W. BOWYER
ONTARIO LAND SURVEYOR

D. Sauer Act. Dep.

LAND REGISTRAR FOR THE LAND
TITLES DIVISION OF YORK (N. 65)

SCHEDULE

BLOCK 85, PLAN 65M-3162, PARTS 1 TO 10, BOTH INCLUSIVE, COMPRISE ALL OF PIN 03331-2519(LT).
BLOCK 85, PLAN 65M-3162, PARTS 13 TO 24, BOTH INCLUSIVE, COMPRISE ALL OF PIN 03331-2518(LT).
BLOCK 84, PLAN 65M-3162, PARTS 23 TO 34, BOTH INCLUSIVE, COMPRISE ALL OF PIN 03331-2517(LT).
BLOCK 83, PLAN 65M-3162, PARTS 38 TO 43, BOTH INCLUSIVE, COMPRISE ALL OF PIN 03331-2516(LT).
BLOCK 82, PLAN 65M-3162, PARTS 44 TO 52, BOTH INCLUSIVE, COMPRISE ALL OF PIN 03331-2515(LT).
BLOCK 81, PLAN 65M-3162, PARTS 53 TO 62, BOTH INCLUSIVE, COMPRISE ALL OF PIN 03331-2514(LT).
BLOCK 80, PLAN 65M-3162, PARTS 63 TO 71, BOTH INCLUSIVE, COMPRISE ALL OF PIN 03331-2513(LT).
BLOCK 79, PLAN 65M-3162, PARTS 72 TO 80, BOTH INCLUSIVE, AND PART 11 COMPRISE ALL OF PIN 03331-2512(LT).
BLOCK 78, PLAN 65M-3162, PARTS 81 TO 89, BOTH INCLUSIVE, COMPRISE ALL OF PIN 03331-2511(LT).
BLOCK 89, PLAN 65M-3162, PARTS 90 TO 99, BOTH INCLUSIVE, COMPRISE ALL OF PIN 03331-2522(LT).
BLOCK 86, PLAN 65M-3162, PARTS 100 TO 109, BOTH INCLUSIVE, COMPRISE ALL OF PIN 03331-2521(LT).
BLOCK 87, PLAN 65M-3162, PARTS 110 TO 119, BOTH INCLUSIVE, COMPRISE ALL OF PIN 03331-2520(LT).
BLOCK 233, PLAN 65M-3153, PARTS 120 TO 122, BOTH INCLUSIVE, AND PART 12 COMPRISE ALL OF PIN 03331-2768(LT).

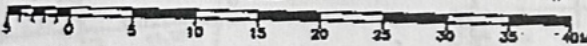
PLAN OF SURVEY

BLOCKS 78 TO 89 BOTH INCLUSIVE
REGISTERED PLAN 65M-3162 AND
BLOCK 233

REGISTERED PLAN 65M-3153

CITY OF VAUGHAN
REGIONAL MUNICIPALITY OF YORK

SCALE 1cm = 5.0m



E. W. BOWYER B.Sc., O.L.S. 1998

NOTES

- DENOTES SURVEY MONUMENT PLANTED
- DENOTES SURVEY MONUMENT FOUND
- SIB DENOTES STANDARD IRON BAR
- IB DENOTES IRON BAR
- MEAS DENOTES MEASURED
- P DENOTES REGISTERED PLAN 65M-3162
- (WIT) DENOTES WITNESS

FOUND MONUMENTS WERE SET BY E.W.BOWYER INC. O.L.S. UNLESS NOTED OTHERWISE.
PLANTED BARS ARE IB UNLESS MARKED OTHERWISE
FOUND BARS ARE IB UNLESS MARKED OTHERWISE

BEARING NOTE:

BEARINGS SHOWN HEREON ARE ASTRONOMIC AND ARE REFERRED TO THE WEST LIMIT OF GIANCOLA CRESCENT AS SHOWN ON REGISTERED PLAN 65M-3162 HAVING A BEARING OF N 16°09'00"W.

METRIC/IMPERIAL

DISTANCES SHOWN ON THIS PLAN ARE IN METRES AND CAN BE CONVERTED TO FEET BY DIVIDING BY 0.3048

SURVEYOR'S CERTIFICATE

- I CERTIFY THAT
- THIS SURVEY AND PLAN ARE CORRECT AND IN ACCORDANCE WITH THE SURVEYS ACT, THE SURVEYOR'S ACT AND THE LAND TITLES ACT AND THE REGULATIONS MADE UNDER THEM.
 - THE SURVEY WAS COMPLETED ON 1 OCTOBER 1998.

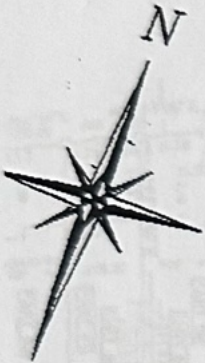
2 OCTOBER 1998

DATE

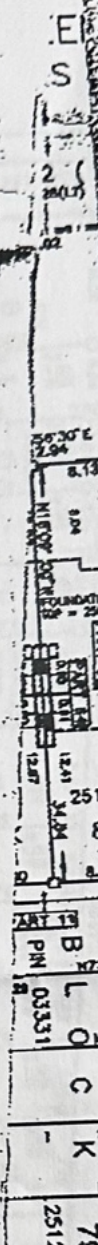
E.W. Bowyer

E. W. BOWYER
ONTARIO LAND SURVEYOR

E. W. BOWYER INC
ONTARIO LAND SURVEYORS
LAND DEVELOPMENT CONSULTANTS



LOT 25,
SECTION 4



FROM MIKE
ATUMADI
to Jane
Re. 95 Giancola

BEARING	DISTANCE
6°30'W	3.60
7°50'W	2.44
6°10'W	6.21
7°50'W	2.02
1°40'W	4.86
1°40'E	18.93
1°40'E	18.47
2°0'W	5.42

AC MUR
REGISTERED PLAN 65M-3162
0331-2580(LT)

LOT 9 LOT 10



CURVE SCHEDULE		
NUM	RADIUS	AR-
C1	55.00	3.6
C2	55.00	2.4
C3	75.00	6.2
C4	75.00	2.0
C5	16.00	4.8
C6	16.00	20.2
C7	16.00	19.6
C8	16.00	5.4
C9	55.00	8.1

11 | LOT 12 | LOT 13 | LOT 14 | LOT 15 | LOT 16 | LOT 17 | LOT 18 | LOT 19 | LOT 20

PIN 03331-1308(R)
INST. N 275258

PART OF
CONCES

CRESCENT

Y AVENUE

BLK. 100
0.3m RESERVE
PIN 03331-2533(LT)

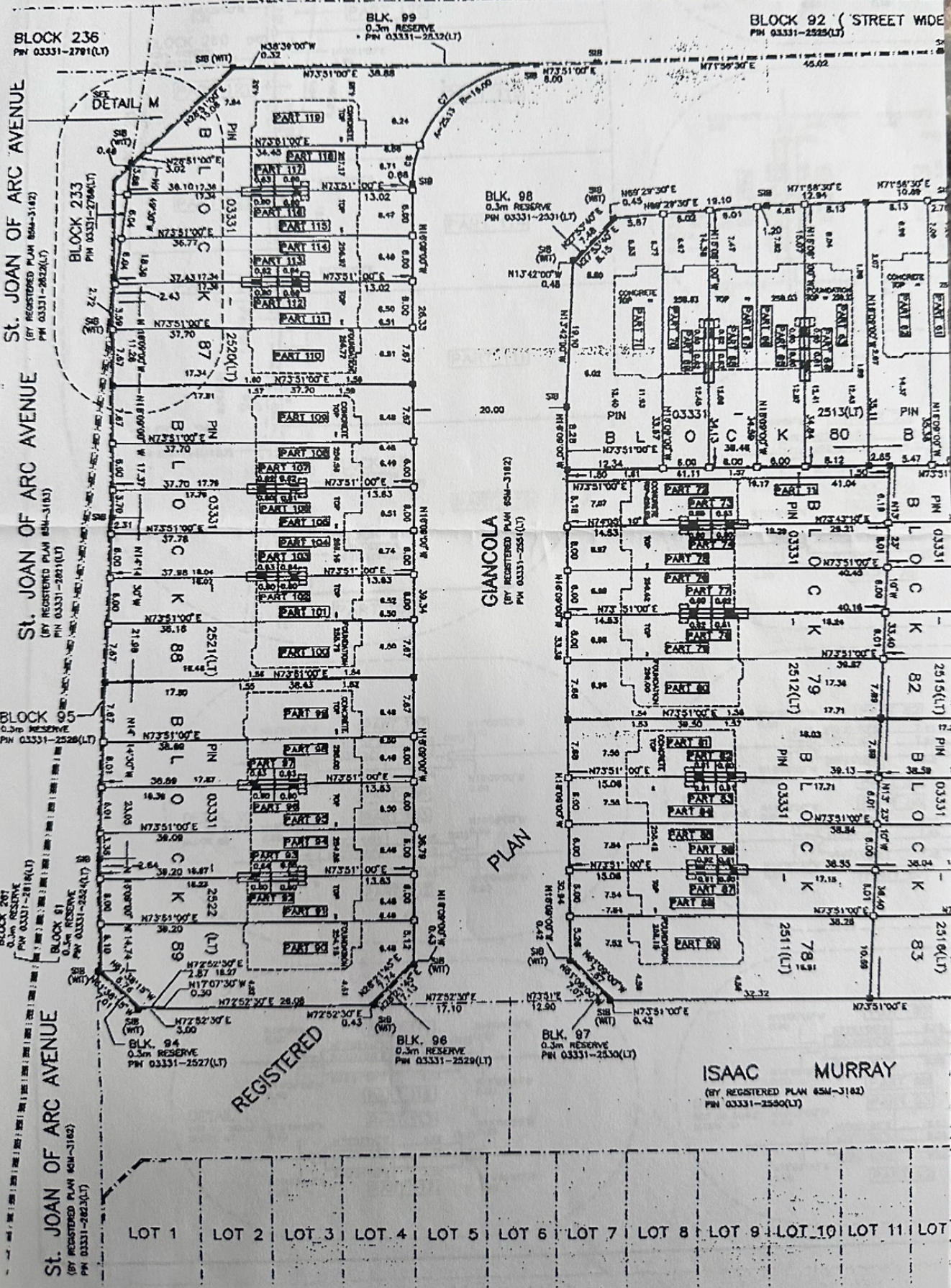
BLK. 101
0.3m RESERVE
PIN 03331-2534(LT)

BLK. 102
0.3m RESERVE
PIN 03331-2535(LT)

BLK. 103
0.3m RESERVE
PIN 03331-2536(LT)

BLK. 99
0.3m RESERVE
PIN 03331-2532(LT)

ROAD ALLOWANCE BETWEEN (KNOWN AS) TEST



BLOCK 236
P.M. 03331-2791(LT)

BLOCK 92 (STREET WIDE)
P.M. 03331-2525(LT)

St. JOAN OF ARC AVENUE
(BY REGISTERED PLAN 804-3142)
P.M. 03331-2823(LT)

St. JOAN OF ARC AVENUE
(BY REGISTERED PLAN 844-3143)
P.M. 03331-2821(LT)

BLOCK 95
0.3m RESERVE
P.M. 03331-2528(LT)

St. JOAN OF ARC AVENUE
(BY REGISTERED PLAN 844-3143)
P.M. 03331-2821(LT)

BLK. 99
0.3m RESERVE
P.M. 03331-2832(LT)

BLK. 98
0.3m RESERVE
P.M. 03331-2531(LT)

GIANCOLA
(BY REGISTERED PLAN 608-1182)
P.M. 03331-2530(LT)

PLAN

ISAAC MURRAY
(BY REGISTERED PLAN 654-3143)
P.M. 03331-2590(LT)

- LOT 1
- LOT 2
- LOT 3
- LOT 4
- LOT 5
- LOT 6
- LOT 7
- LOT 8
- LOT 9
- LOT 10
- LOT 11
- LOT

